

## Welcome to Covenant Glen!

Extraordinary care is provided in two communities; assisted living and memory care. Unique life enrichment programs and activities complement the support services for each resident. Amenities and features include:

- Warm, home-like community
- Life enrichment activities
- Unique all inclusive care package
- Three daily nutritional meals
- Transportation
- 24 hour care staff
- Full housekeeping and laundry service
- Salon
- Café and theater

For more information visit [covenantglen.com](http://covenantglen.com) or call us at **989.262.8340**.

*extraordinary*  
assisted living and  
memory care

PRICES STARTING AT  
**\$3,750 / Month**

Covenant Glen  
1040 Covenant Drive  
Frankenmuth, MI 48734

**Covenant Glen**  
1040 Covenant Drive  
Frankenmuth, MI 48734

For more information visit  
[covenantglen.com](http://covenantglen.com) or contact  
us at **989.262.8340**.

FIND US ON FACEBOOK  
[www.facebook.com/covenantglen/](http://www.facebook.com/covenantglen/)

## Assisted Living

Our assisted living community's intention is to enrich the lives of our residents by providing services that are designed to each individual's unique needs 24 hours a day. Covenant Glen has created an all inclusive package, offering the desired services and care our residents need and prefer. This unique all inclusive package also provides family members of our residents the confidence and peace of mind that their loved one is being well cared for with compassion, respect and integrity.

### Assisted Living Services

- Specially trained staff 24 hours a day
- Private apartments providing kitchenette and full bath
- Three nutritious meals and snacks daily
- Housekeeping and laundry services
- On-site beauty salon
- 24-hour emergency call system
- Medication management
- Reminders for all meals, activities and medical appointments
- Assistance with bathing, dressing, walking and grooming
- Room sizes available are the Classic, Grand and Premier Suites
- Appointment transportation
- Utilities included
- Cable television
- Wi-Fi

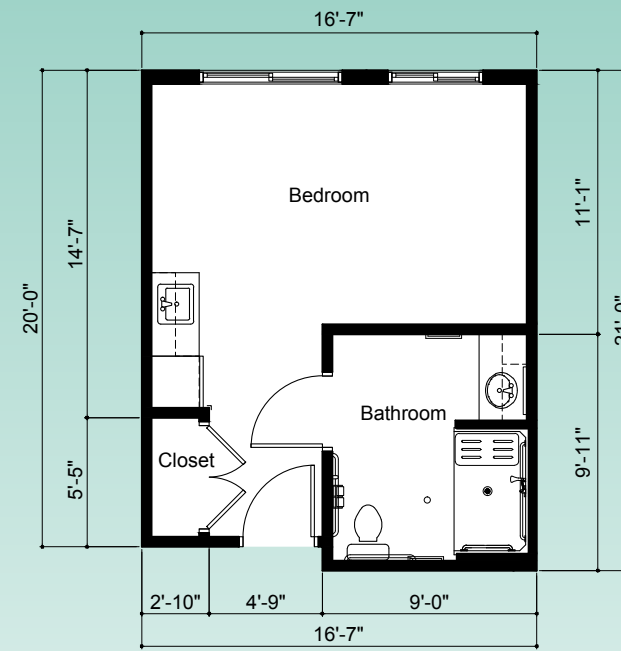
## Memory Care

Our memory care has been uniquely designed to meet the needs of our residents. Each apartment and common area provides a nurturing environment of comfort and safety allowing residents the dignity to live their lives in a familiar way. Our daily activities and programs revolve around recognizing individuality as well as encouraging choices that engage each resident in a very personal way.

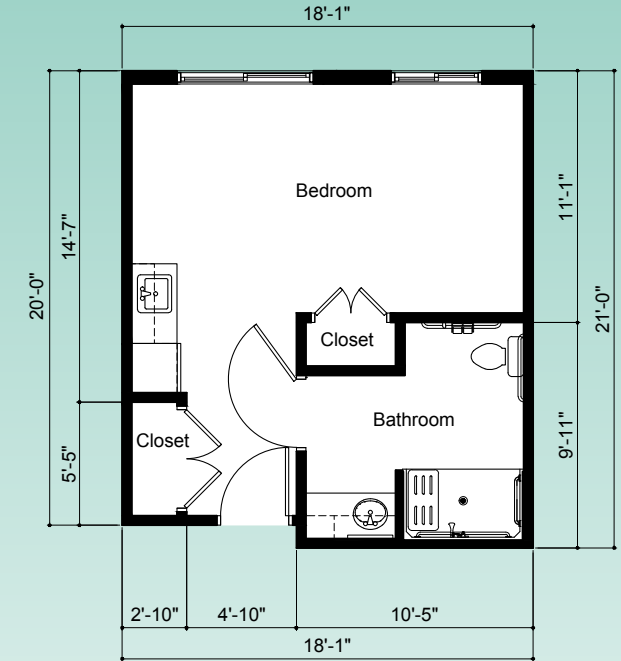
### Memory Care Services

- Specially trained staff 24 hours a day
- Increased safety level to assist with ADL's
- Three nutritious meals and snacks daily
- Medication management
- Assistance and reminders within the community
- Individualized support with activities of daily living
- Housekeeping and laundry services
- 24-hour emergency call system
- Appointment transportation
- Room sizes available are the Classic and Grand Suites
- Utilities included
- Personal shopping
- Cable television
- Wi-Fi

**Classic Suite**  
Cozy 307 sq. ft.



**Grand Suite**  
Comfortable 337 sq. ft.



**Premier Suite**  
Spacious 444 sq. ft.

